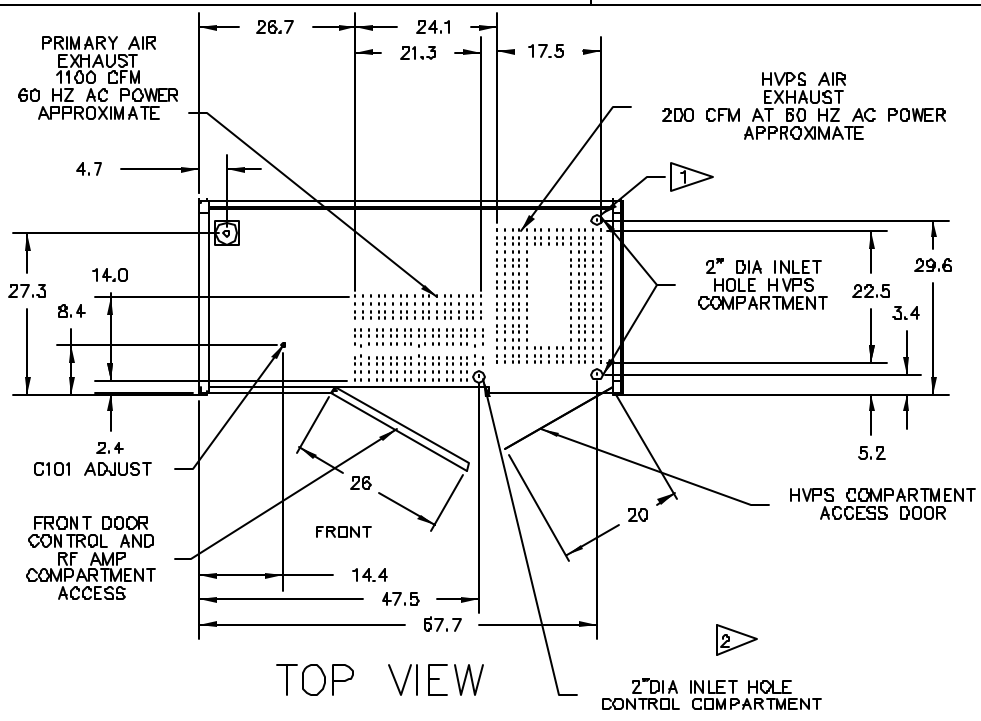
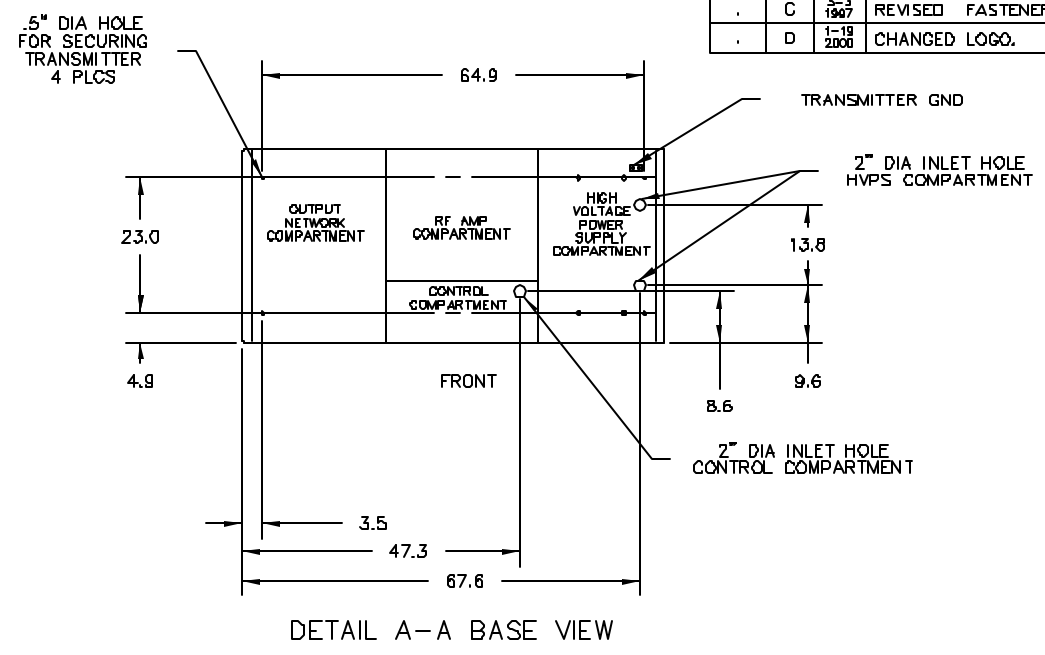


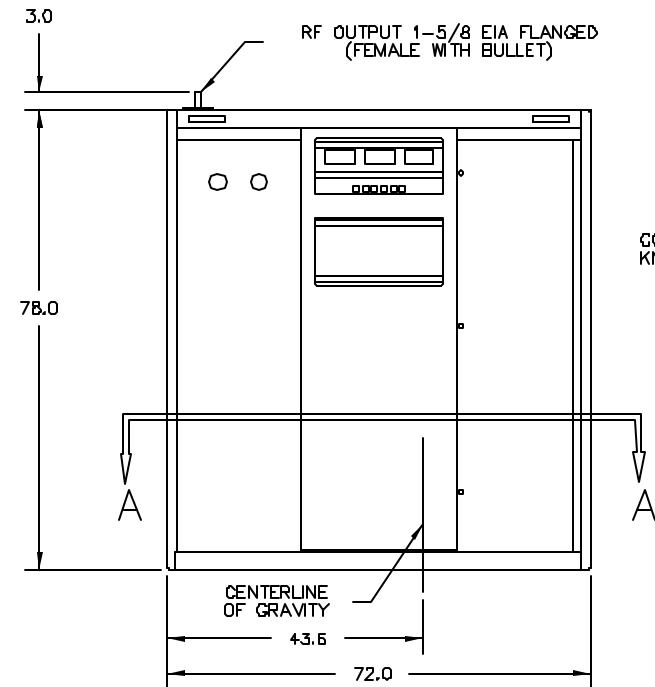
839 6208 264					
B	89	REVISED SHEET 2	DR		35260
C	1907	REVISED FASTENERS, SHEET 1 & 2	SEC	SEC	41759
D	1-19 2000	CHANGED LOGO.	VRM	SJS	45659



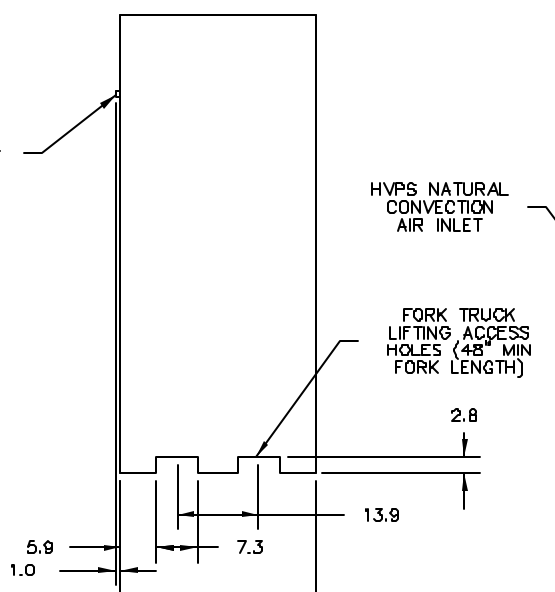
TOP VIEW



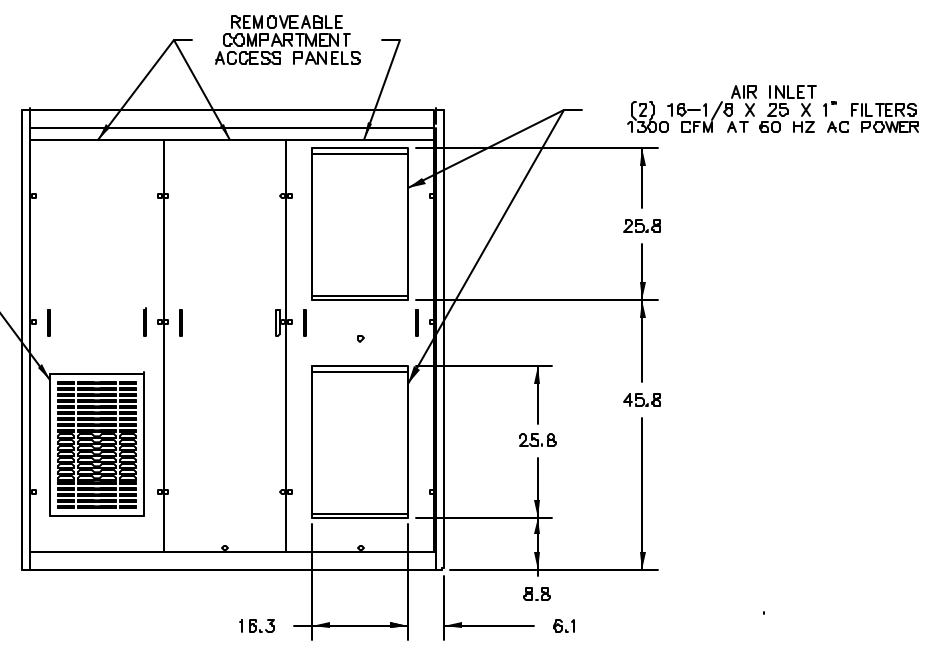
DETAIL A-A BASE VIEW



FRONT VIEW



SIDE VIEW



REAR VIEW

UNLESS NOTED:
DIMENSIONS ARE IN INCHES
TOLERANCES:
.X ± .030
.XX ± .015
.XXX ± .005
ANGLES ± 1 DEG.



HARRIS CORPORATION
BROADCAST COMMUNICATIONS
P.O. BOX 4290
QUINCY, ILLINOIS 62305

THIS DOCUMENT CONTAINS PROPRIETARY DATA OF HARRIS CORPORATION. NO DISCLOSURE, REPRODUCTION, OR USE OF ANY PART THERE OF MAY BE MADE EXCEPT BY WRITTEN PERMISSION.

DR. BY	CR 6-25-87	TITLE	
ENG. CHK.	GJK 12/1/87	CABINET OUTLINE,DX10	
PRQJ. ENG.	MR 12/1/87		
MFG. ENG.	MR 12/1/87		
MATL.		SHEET	DWG. NO.
		1 OF 2	839 6208 264

- 2 EXTERNAL INTERFACE TERMINATION 6" BELOW THIS INLET
- 1 AC POWER TERMINATION 40" BELOW THIS INLET

4

3

2

1

		839 6208 264			
.	B	1/4 96	DELETED HIGH PRESSURE PORTS	DR	35260
.	C	2-3 1997	REVISED FASTENERS	SEC	SEC 41759
.	D	1-18 2000	CHANGED LOGO	VRM	SJS 45659

AC POWER REQUIREMENTS:

197-281 VAC, 3 PHASE, 48 TO 63 HZ
 3-WIRE DELTA,
 OR 341-468 VAC, 3 PHASE, 48 TO 63 HZ
 4-WIRE WYE.
 (INPUT TERMINAL #4 AWG MAX WIRE SIZE)

POWER CONSUMPTION:

18 KW OR LESS AT 10 KW OUTPUT,
 100% SINE WAVE MODULATION

TOTAL DISSIPATION AT 10KW OUTPUT,
100% SINE WAVE MODULATION:

3,000 WATTS
 OR 10,300 BTUH.
 (CABINET HEAT RADIATION LESS THAN
 300 WATTS OR 1,030 BTUH)

FORCED CONVECTION AIR FLOW THROUGH TRANSMITTER:

AT 60 HZ AC POWER
 1300 CFM,
 AT 50 HZ AC POWER
 900 CFM.

NOISE LEVEL MEASURED ONE METER FROM FLOOR AND
ONE METER FROM TRANSMITTER:

FRONT 63 dBA
 RIGHT SIDE 65 dBA
 LEFT SIDE 65 dBA
 REAR 72 dBA

TOTAL VOLUME:

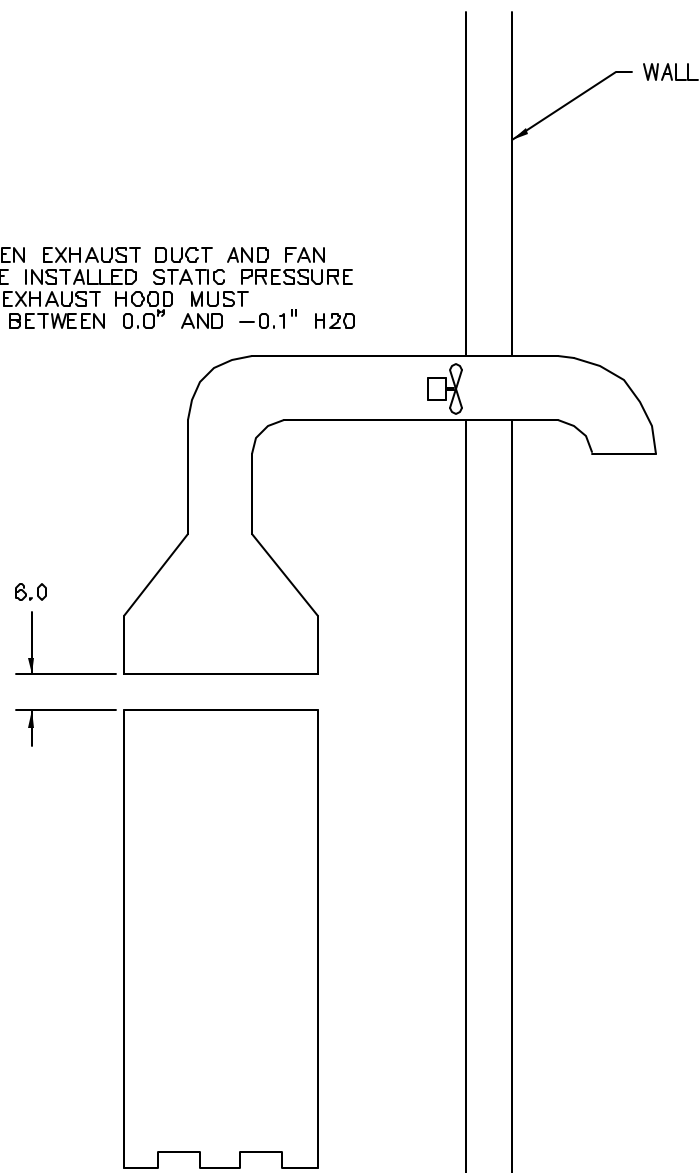
CUBIC FEET 107.25
 CUBIC METERS 3.04

WEIGHT:

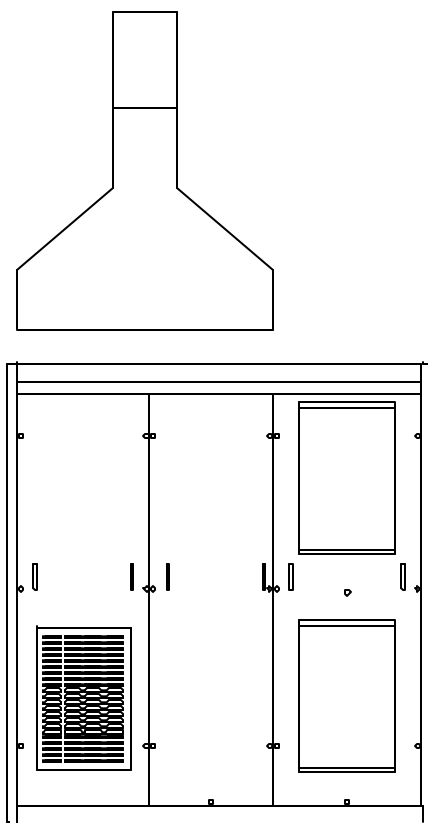
1535 LBS
 696 KGS

- 3 INLET AIR TEMPERATURE MUST NOT EXCEED 50 DEGREES CENTIGRADE AT SEA LEVEL. DERATE AT 2 DEGREES CENTIGRADE PER 1,000 FEET ELEVATION.
- 2 EXHAUST SYSTEM SHOWN ON THIS DRAWING IS A SUGGESTED INSTALLATION. IF EXISTING TRANSMITTER SITE PRECLUDES THE USE OF THIS SYSTEM, CONSULTATION WITH A HVAC CONTRACTOR AND/OR HARRIS ENGINEERING DEPARTMENT IS REQUIRED.
- 1 IF EXHAUST AIR IS DUCTED FROM TRANSMITTER HALL, A FILTERED INLET AIR MAKE-UP SYSTEM MUST BE INSTALLED TO PREVENT THE TRANSMITTER FROM BECOMING AIR-STARVED AND OVERHEATED.

WHEN EXHAUST DUCT AND FAN
 ARE INSTALLED STATIC PRESSURE
 IN EXHAUST HOOD MUST
 BE BETWEEN 0.0" AND -0.1" H2O



SIDE VIEW



REAR VIEW

UNLESS NOTED:
 DIMENSIONS ARE IN INCHES
 TOLERANCES:
 .X ± .030
 .XX ± .015
 .XXX ± .005
 ANGLES ± 1 DEG.



HARRIS CORPORATION
 BROADCAST COMMUNICATIONS
 P.O. BOX 4290
 QUINCY, ILLINOIS 62305

THIS DOCUMENT CONTAINS PROPRIETARY DATA OF HARRIS CORPORATION. NO DISCLOSURE, REPRODUCTION, OR USE OF ANY PART THERE OF MAY BE MADE EXCEPT BY WRITTEN PERMISSION.

DR. BY CR 6-25-87	TITLE	
ENG. CHK. GJK 12/1/87	CABINET OUTLINE,DX10	
PRQJ. ENG. MR 12/1/89	.	
MFG. ENG. MR 12/1/89	.	
MATL .	SHEET 2 OF 2	DWG. NO. 839 6208 264

4

3

2

1