

NEXIO® Production Playout Center

Live Event and Production Platform

SERVERS // SPECIALTY SERVERS



NEXIO® servers move to an all-new level of functionality for sports and venue production with the introduction of Production Playout Center (PPC) — a software control layer designed to control playback of NEXIO server channels in a variety of production environments.

Created using feedback from broadcast leaders in both the news and sports arenas, PPC is a server ingest and playout application with capabilities that go far beyond other available products. From a single 1RU platform, PPC controls up to 16 NEXIO server channels for ingest and playback, as well as up to eight routers.

PPC is made up of five software modules that fit into any type of production setting from scripted news, to on-the-fly live productions, to sports arena environments. All five modules are included with the PPC (NX1011PPC).



Multiple PPCs can be used simultaneously on a single NEXIO system, each running any one of the supported modules at a given time. The number of PPCs in any system is limited only by the number of NEXIO channels the system can support.

Speed to air is the driving force behind the PPC control application. Onboard media preparation tools allow the operator to define and organize content while recording is still underway. Tally indicators provide live notification of which channels are on-air — keeping the operator constantly aware of the production. And with configurable shortcut keys, live asset and metadata updates, and built-in Fast-Cue technology for instant navigation to key points in long pieces of media, the PPC allows you to get your material on-air in record time.

Newsroom Script Module

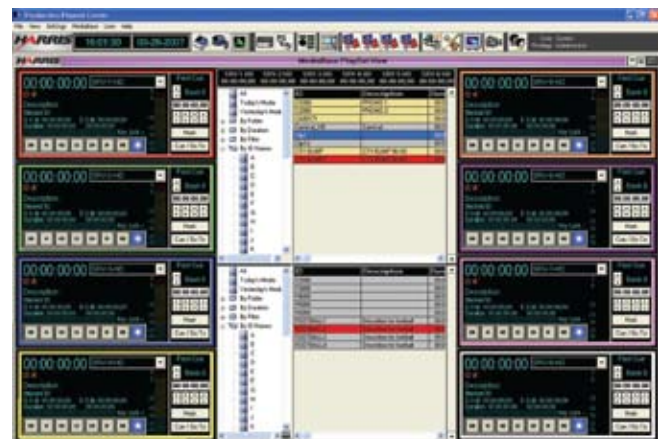


FEATURES

- 16 channels of playout control
- Crash record capabilities
- Support for subclipping, trimming and deleting
- Integration with jog/shuttle/T-bar controller*
- Avid® iNews® newsroom computer system interface with live updates
- Clip Sync/Protect dual roll (key/fill, HD and SD, etc.)
- Instant clip looping without a playlist
- Fast-Cue technology to quickly jump to specific timecodes in long clips
- Live updates to NEXIO® MediaBase™ clip list
- Multi-bank storing and fast recall of pointers — allowing user to mark key points in long records and quickly go to those points
- Nonlinear playback — allowing playlist order to be adjusted on the fly
- Clip stacking — allowing a second clip to be cued behind the clip being played
- Focus routing — automatic router switching for monitoring when switching channels
- Full router control (eight routers @ 1024x1024 cross points each)
- Tally status from production switcher
- Configurable colors and labels throughout, allowing the user to create a custom interface to meet their specific needs
- More than 30 configurable shortcut keys

*Controller available directly from DNF Controls.

Shot Selector



NEXIO® Production Playout Center

Live Event and Production Platform

SERVICES // SPECIALTY SERVERS

PRODUCT DETAILS

Shotbox Module

The Shotbox module provides an extremely visual playback tool that is ideal for control of scoreboard content in an arena environment or for manual playback in any broadcast environment. Each Shotbox module can control up to 16 different NEXIO playout channels.

Featuring seamless integration with NEXIO® MediaBase, Shotbox allows for instant playback of server content with a single click. On-the-fly stacking of a second ID in the queue enables the second clip to play seamlessly the minute the currently loaded clip ends. With Shotbox, up to five playlists can be created for simple playback of a group of clips, and an unlimited number of playlists can be saved and loaded for later use. The module also allows for simultaneous playback of up to four playlists or individual pieces of media.

With large buttons allowing for use of a touchscreen monitor rather than a keyboard and mouse, training is a snap. And touchscreen operation makes this module an ideal option anywhere desk real estate is at a premium.

As well as being included with each PPC system, the Shotbox module can be purchased as a standalone, software-only package (NXA1000SBX) to be installed on a customer-supplied PC. The purchase of a full turnkey PPC system is not required if only Shotbox functionality is desired.

Fast Replay Module

The Fast Replay module is the perfect tool for creating fast replays, with slow-motion playback, from multiple camera angles in a live-event environment. The module enables monitoring of up to four camera angles (provided via NEXIO record channels), and playback from up to four NEXIO playout channels. With up to four Fast Replay modules able to run simultaneously on a single system, the PPC enables operators to monitor a total of 16 camera angles and control 16 NEXIO playout channels.

With Fast Replay, the operator can create marks from one or all of the records and play them back instantly, or add them to a highlight bank for playback later. Since all camera angles are being continuously recorded, it's easy to go back and mark a key play for later use — even if you miss a play. Virtually the entire workflow can be run from an external control surface (currently DNF), allowing plays to be marked on one or all angles, and slow-motion playback of one or all angles.

Highlight banks can be shared among up to four Fast Replay module operators, allowing for a dynamic, collaborative workflow. If one operator missed a play, they can easily grab it from another operator and play it out of their own playback channel.

The Fast Replay module can be purchased as a software-only package (NX-A1000FRSM) to be installed on a customer-supplied PC to expand replay capabilities to control another four camera angles and four outputs. The software-only version of the Fast Replay module requires that each NEXIO system have a turnkey PPC system (NX1011PPC) present.

The following three modules are only available with the purchase of an NX1010PPC, they are NOT available as separate software-only modules.

Package Builder Module

The Package Builder module is designed for fast creation and turnaround of simple packages. This module allows the playout operator to quickly select a number of marks from one or more Fast Replay module operators and create a playlist for immediate playback (in-game editing).

The Package Builder supports two lists running simultaneously (preview and program). Playlists can be stored in a playlist bank, which allows the operator to jump around from playlist to playlist in a flash. Bank sharing among multiple PPC systems provides further flexibility; for example, one operator can work on packages for players on one team, while another operator creates packages for players on the other team. These packages can then be easily shared. The packages can also be exported as EDLs directly to Velocity ESX™, Apple® Final Cut Pro®, or other NEXIO-connected third-party editors.

Full, dynamic slow-motion control can be achieved using an external hardware control panel with a T-Bar. When there is no time for an edit suite, the Package Builder module is the ideal package-building tool.

Shot Selector Module

The Shot Selector module is designed for live, unscripted playout. Dual or single views of the NEXIO MediaBase clips list allow for quick access to any piece of media. Up to eight server channels can be loaded and played back via drag/drop within the user interface, or with shortcut keys.

Bank storage, along with Fast-Cue technology, allows for quick access and recall of segments from within longer media clips (ideal for growing records of live events). On-the-fly stacking of a second ID in the queue enables the second clip to play seamlessly the minute the currently playing clip ends.

Fully interactive tally status keeps the operator aware of what's happening in the control room, helping to avoid on-air mistakes. NEXIO MediaBase clip list searching and filtering is supported and allows the operator to be in two places at the same time. An optional jog/shuttle knob with T-bar controller has access to all eight server channels.

Newsroom Script List Module

The Newsroom Script List module allows an operator to control four server channels from a single playlist. With four playlists able to run simultaneously, the module allows operators to control a total of 16 NEXIO channels (four channels in each of the four playlists).

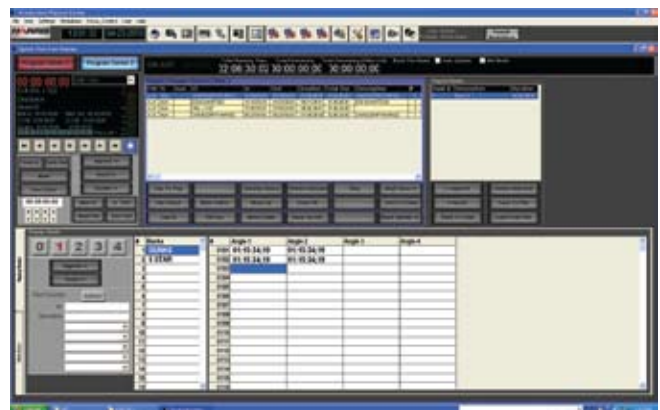
Configurable colors and grid layout provide a customized operator experience. Because the playlist allows for nonlinear control, the operator is not necessarily tied to the play-out order presented by the newsroom system. Status updates indicate which items in the playlist are ready for playout, which items are cued, and most importantly, which items are NOT ready. Full tally support from the production switcher aids in supporting your productions.

In addition to standalone operation, the Newsroom Script List module also interfaces with Avid® iNews® via the iNews monitor application, allowing seamless integration of NEXIO playout channels with the iNews NRCS.

Replay Module



Package Builder

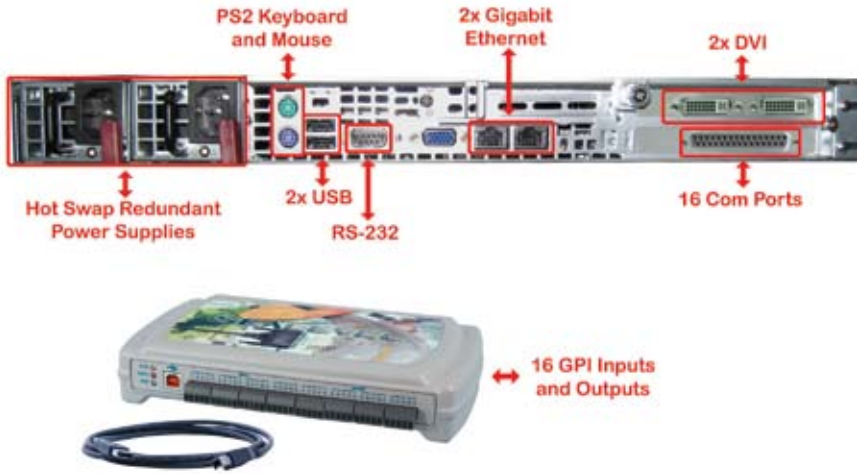


NEXIO® Production Playout Center

Live Event and Production Platform

IMAGES/DIAGRAMS

NX1011PPC Rear View and Breakout



SPECIFICATIONS

Specifications are subject to change without notice.

Supported Formats	Production Playout Center (PPC) has no codec dependencies; it supports any format available to the underlying NEXIO server system; for slow-motion applications, 720p is recommended
Interfaces	16 optically isolated inputs and 16 Reed relay outputs via USB Breakout 16 serial ports 2 x 1 GB Ethernet ports 2 PS/2 ports 2 USB ports 1 RS-232 port
Operating System	Windows® 7 32-bit
Components	AMD Multi-core Processor 4 GB ECC RAM
Display	nVidia Quadro FX 380
Form Factor	1RU rackmount chassis
Dimensions (W x D x H)	17.2 x 23.5 x 1.7 in. (437 x 597 x 43 mm)
Color	Black
Front Panel Buttons	Power on/off button System reset button UID button
LEDs	Power status LED Hard drive activity LED 2 Network activity LEDs Universal information (UID) LED
System Cooling Fans	4 X 40 x 56 mm counter-rotating PWM fans
Operating Environment (system)	Operating temperature range: 50° to 95° F (10° to 35° C) Non-operating temperature range: -40° to 158° F (-40° to 70° C) Humidity range: 8% to 90%, non-condensing Non-operating humidity range: 5 to 95%, non-condensing

Minimum PC Specifications for Shotbox and Fast Replay

Software-only Modules	Intel™ Core®2 Duo or AMD Dual-Core processor (2 GHz Dual-Core, 4 MB L2 cache, 800 MHz FSB) 4 GB ECC RAM NVIDIA Quadro FX 380 256MB graphics card 100GB 7200RPM Ultra ATA, SATA or SAS hard drive 2 Gigabit Ethernet ports 2 USB 2.0 ports Microsoft® Windows 7 x32 Edition
Power Supply	650 W (1 + 1) redundant AC-DC power supply AC Voltage: 100 to 240 V, 60 to 50Hz, 8 to 4 A 5 V: standby: 3 A 12 V: 54 A
With Power Distributor	5 V: 25 A 3.3 V: 25 A -12 V: 0.6 A
Regulatory (Power Supply)	Power Supply Safety/EMC USA: UL-Listed, FCC Canada: CUL-Listed CCC Certification EN 60950/IEC 60950-compliant Europe/CE mark Germany: TUV-certified

ORDERING INFORMATION

NX1011PPC	NEXIO Production Playout Center turnkey system with 1 RU computer, Shotbox, Fast Replay, Package Builder, Shot Selector and Newsroom Script List modules
NXA1000FRSM	NEXIO Production Playout Center Fast Replay/Slow Motion module (only available with the purchase of an NX1011PPC)
NXA1000SBX	NEXIO Production Playout Center Shotbox module (available with or without the purchase of an NX1011PPC)