

	TOTAL DISSIPATION	OUTPUT POWER	OVERALL EFFICIENCY	WEIGHT
Z16 'HD ONLY'	8,167 W (27,860 BTU)	3,500W	30%	1750 LBS 795 KGS
Z16 'FM+HD'	10,100 W (34,460 BTU)	7,000W	41%	1750 LBS 795 KGS
Z12 'HD ONLY'	6,261W (21,363 BTU)	2,600W	29.5%	1710 LBS 777 KGS
Z12 'FM+HD'	7,562W (25,802 BTU)	5,000W	39.9%	1710 LBS 777 KGS

MINIMUM AIR FLOW INTAKE(50/60Hz)
 LOW SPEED: 900 CFM [25.5 CMM]
 HIGH SPEED: 1400 CFM [39.6 CMM]
 EXHAUST FLOW (ESTIMATE 10% LEAKAGE)
 LOW SPEED: 810 CFM [23 CMM]
 HIGH SPEED: 1260 CFM [35.6 CMM]
 UNDER NORMAL OPERATING CONDITIONS
 BLOWER SPEED IS "LOW".

CABINET HEAT RADIATION 5% OR LESS OF TOTAL DISSIPATION

EXHAUST DUCT MUST NOT INDUCE ANY BACK PRESSURE TO TRANSMITTER AIR SYSTEM

NOISE LEVEL MEASURED ONE METER FROM FLOOR AND ONE METER FROM TRANSMITTER, NORMAL CONDITIONS

IF EXHAUST DUCT AND FAN ARE INSTALLED STATIC PRESSURE IN EXHAUST HOOD MUST BE BETWEEN 0.0" AND -0.01" [0.25 MM] H₂O

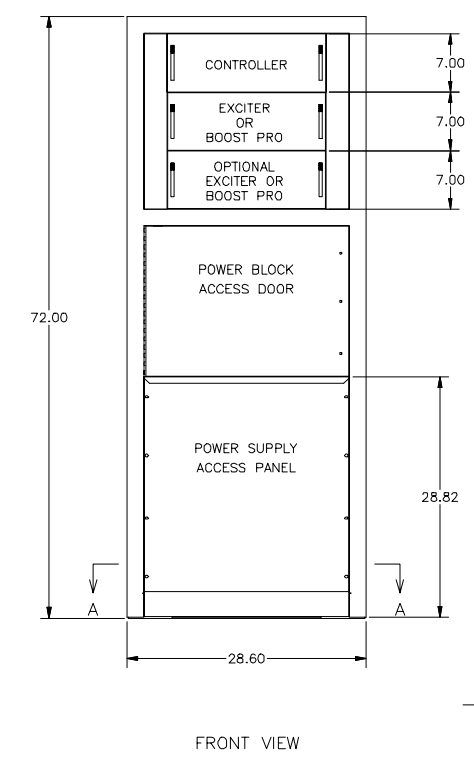
AC LINE FREQ	LOW SPEED		HIGH SPEED	
	FRONT/SIDE	REAR	FRONT/SIDE	REAR
50Hz	<65 dBA	<71 dBA	<74 dBA	<80 dBA
	<68 dBA	<74 dBA	<79 dBA	<85 dBA

INLET AIR TEMPERATURE MUST NOT EXCEED 45 DEGREES CENTIGRADE AT SEA LEVEL. DERATE AT 2 DEGREES CENTIGRADE PER 1,000 FEET ELEVATION.

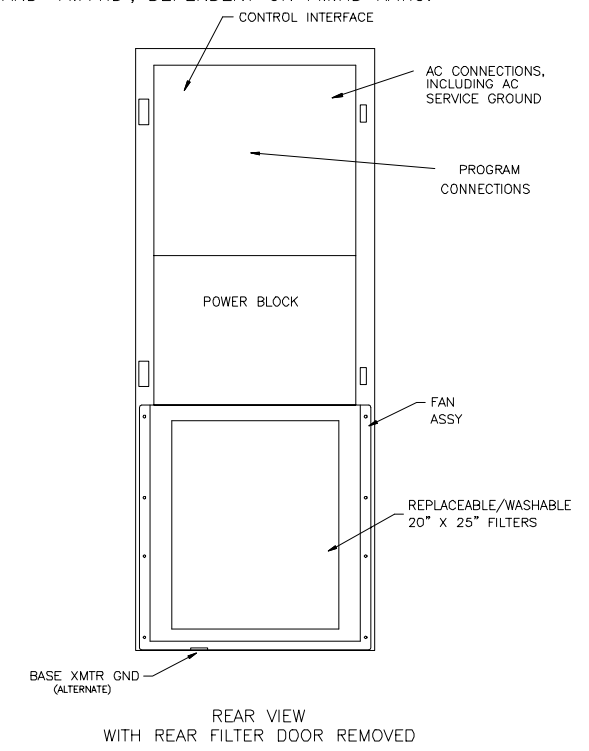
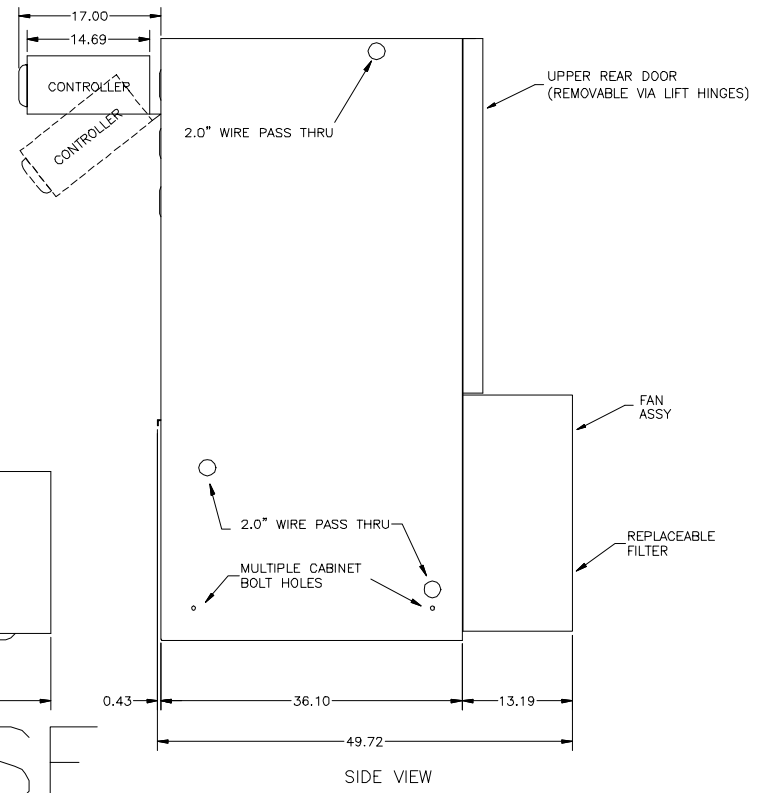
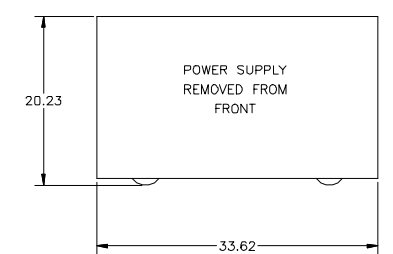
	NOMINAL LINE VOLTAGE	AVERAGE LINE CURRENT		AVERAGE LINE CURRENT		FUSE SIZE	MINIMUM WIRE SIZE
		Z16'HD'	Z16'FM+HD'	Z12'HD'	Z12'FM+HD'		
3φ 3 WIRE	208	28	46	24	33	80A	4 AWG (19 mm ²)
	220	26.5	42	22.5	31	80A	4 AWG (19 mm ²)
	240	24	40	20.5	28.5	80A	4 AWG (19 mm ²)
	437	13.5	22	11.5	16	40A	8 AWG (8mm ²)
	460	13	21	11	15	40A	8 AWG (8mm ²)
3φ 4 WIRE NOTE 2	480	12	20	10.5	14.5	40A	8 AWG (8mm ²)
	506	11.5	19	10	13.5	40A	8 AWG (8mm ²)
	360	16	27	14	19	45A	8 AWG (8mm ²)
	380	15.5	25	13	18	45A	8 AWG (8mm ²)
	416	14	23	12	16.5	45A	8 AWG (8mm ²)

IMPORTANT: YOUR AC MAINS DISCONNECT BOX SHOULD BE EQUIPPED WITH CLASS RK5 FUSES (DUAL ELEMENT TIME DELAY) OR AN EQUIVALENT MOTOR-STARTING CIRCUIT BREAKER

SPLIT-LEVEL FIGURES FALL BETWEEN 'HD ONLY' AND 'FM+HD', DEPENDENT ON FM:HD RATIO.



3 PHASE



TOLERANCES UNLESS NOTED .X ± .030 .XX ± .015 .XXX ± .005 ANGLES ± 1 DEG ALL ✓ INDICATES 125 MICRO INCH	ALL DIMENSION IN INCHES UNLESS OTHERWISE NOTED MUST COMPLY WITH WORKMANSHIP STANDARDS SPEC 817-1152-001
---	--

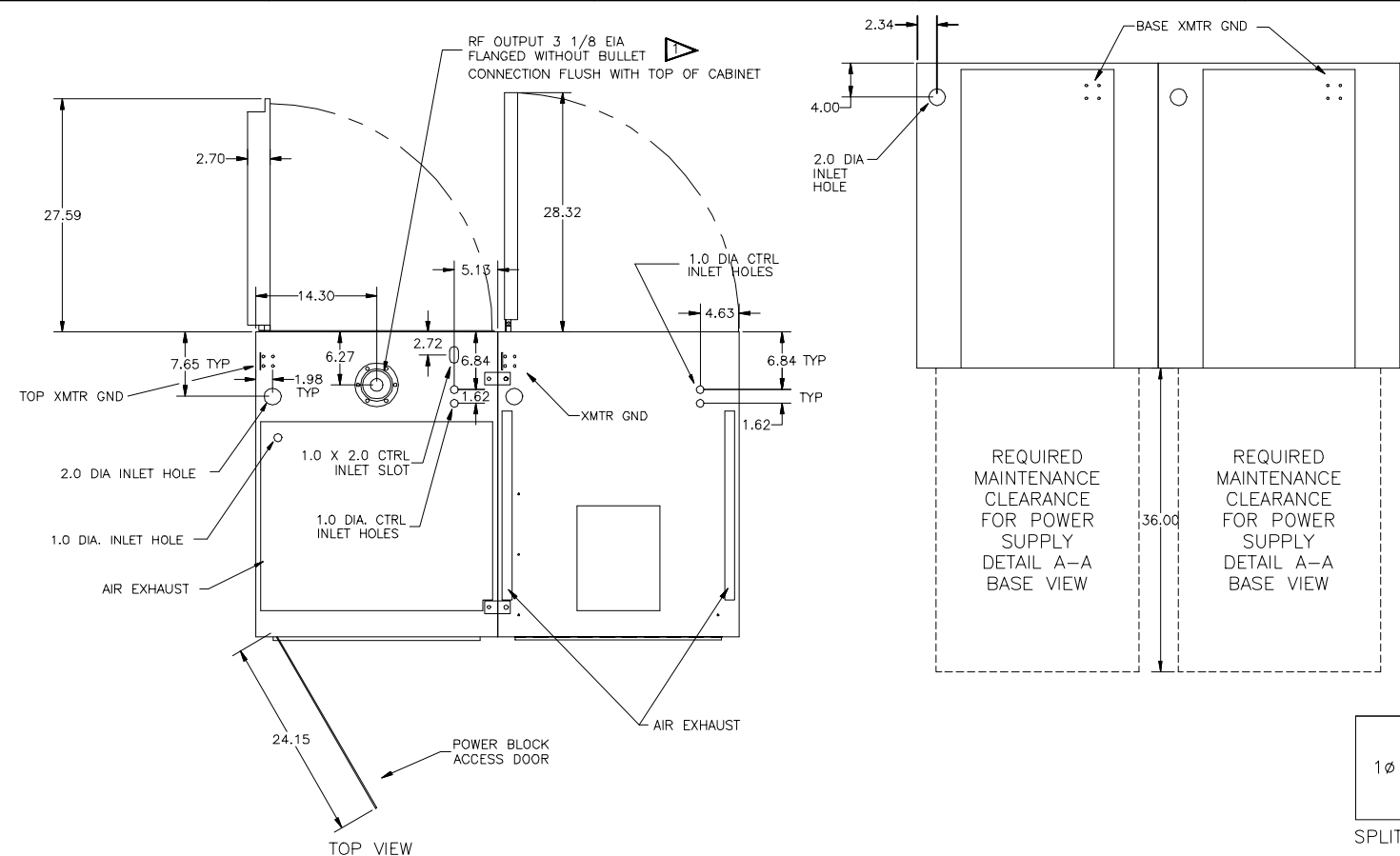
- NOTES
- MAY BE ORDERED AS 1-5/8 EIA FLANGED OUTPUT. (REMOVABLE ADAPTER MAKES RF OUTPUT 2 INCHES TALLER THAN HEIGHT OF TRANSMITTER.)
 - SEE THE TECHNICAL MANUAL FOR A SPECIAL NOTE CONCERNING 360 TO 416 VOLT SYSTEMS.
 - DEFINITION OF TERMS:
 HD ONLY = HIGH-LEVEL = SEPARATE MODE
 FM+HD = LOW-LEVEL = COMMON MODE (20DB RATIO)
 SPLIT-LEVEL = MID-LEVEL = FM+HD (VARIABLE RATIO)

REV	LTR	ZONE	DATE	DFTM	ENG	ECD NBR
A	NEW DWG
DRAWN FROM 852 9232 005						

HARRIS
 HARRIS CORPORATION
 BROADCAST COMMUNICATIONS
 4393 DIGITAL WAY
 MASON, OHIO 45040

THIS DOCUMENT CONTAINS PROPRIETARY DATA OF HARRIS CORPORATION. NO DISCLOSURE, REPRODUCTION, OR USE OF ANY PART THEREOF MAY BE MADE EXCEPT BY WRITTEN PERMISSION.

DRAWN BY B ARROWSMITH	TITLE OUTLINE DRAWING Z12HD+/Z16HD+ IBOC TRANSMITTER
DATE 31 JAN 06	
ENG CHK B KLESNER	
PROJ ENG B GLECKLER	
MFG ENG B OLSON	DWG NO. 852 9232 021
C SHEET 1 OF 2	REV A



	TOTAL DISSIPATION	OUTPUT POWER	OVERALL EFFICIENCY	WEIGHT
Z16 'HD ONLY'	8,167 W (27,860 BTU)	3,500W	30%	2300 LBS 1045 KGS
Z16 'FM+HD'	10,100 W (34,460 BTU)	7,000W	41%	2300 LBS 1045 KGS
Z12 'HD ONLY'	6,261W (21,363 BTU)	2,600W	29.5%	2280 LBS 1027 KGS
Z12 'FM+HD'	7,562W (25,802 BTU)	5,000W	39.9%	2280 LBS 1027 KGS

MINIMUM AIR FLOW INTAKE(50/60Hz)
 LOW SPEED: 900 CFM [25.5 CMM]
 HIGH SPEED: 1400 CFM [39.6 CMM]
 EXHAUST FLOW (ESTIMATE 10% LEAKAGE)
 LOW SPEED: 810 CFM [23 CMM]
 HIGH SPEED: 1260 CFM [35.6 CMM]
 UNDER NORMAL OPERATING CONDITIONS
 BLOWER SPEED IS "LOW".
 EXHAUST DUCT MUST NOT INDUCE ANY BACK
 PRESSURE TO TRANSMITTER AIR SYSTEM
 IF EXHAUST DUCT AND FAN ARE INSTALLED
 STATIC PRESSURE IN EXHAUST HOOD MUST
 BE BETWEEN 0.0" AND -0.01" [0.25 MM] H₂O

CABINET HEAT RADIATION 5% OR LESS OF TOTAL DISSIPATION

NOISE LEVEL MEASURED ONE METER FROM FLOOR AND ONE METER FROM TRANSMITTER, NORMAL CONDITIONS

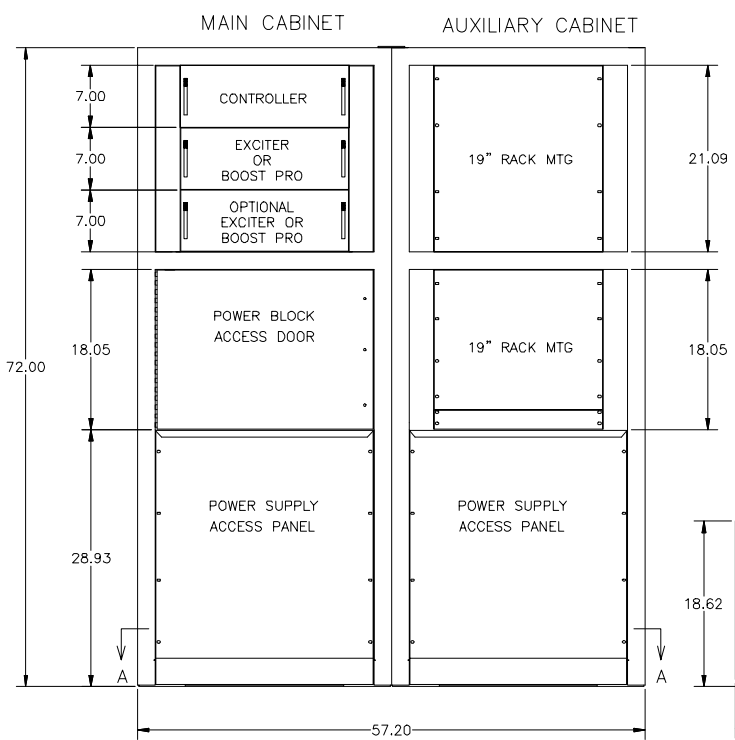
AC LINE FREQ	LOW SPEED		HIGH SPEED	
	FRONT/SIDE	REAR	FRONT/SIDE	REAR
50Hz	<65 dBA	<71 dBA	<74 dBA	<80 dBA
60Hz	<68 dBA	<74 dBA	<79 dBA	<85 dBA

INLET AIR TEMPERATURE MUST NOT EXCEED 45 DEGREES CENTIGRADE AT SEA LEVEL. DERATE AT 2 DEGREES CENTIGRADE PER 1,000 FEET ELEVATION.

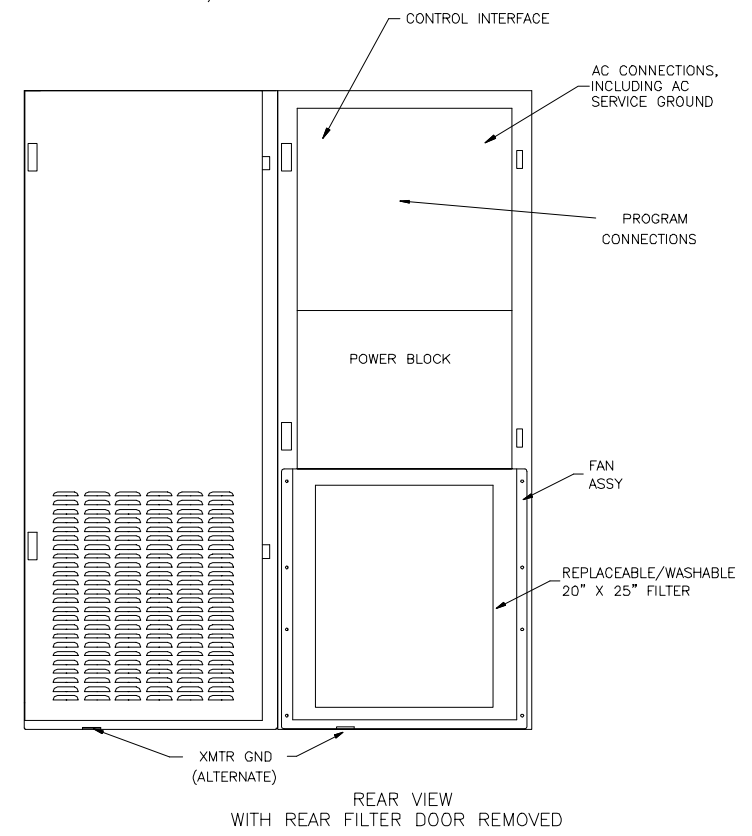
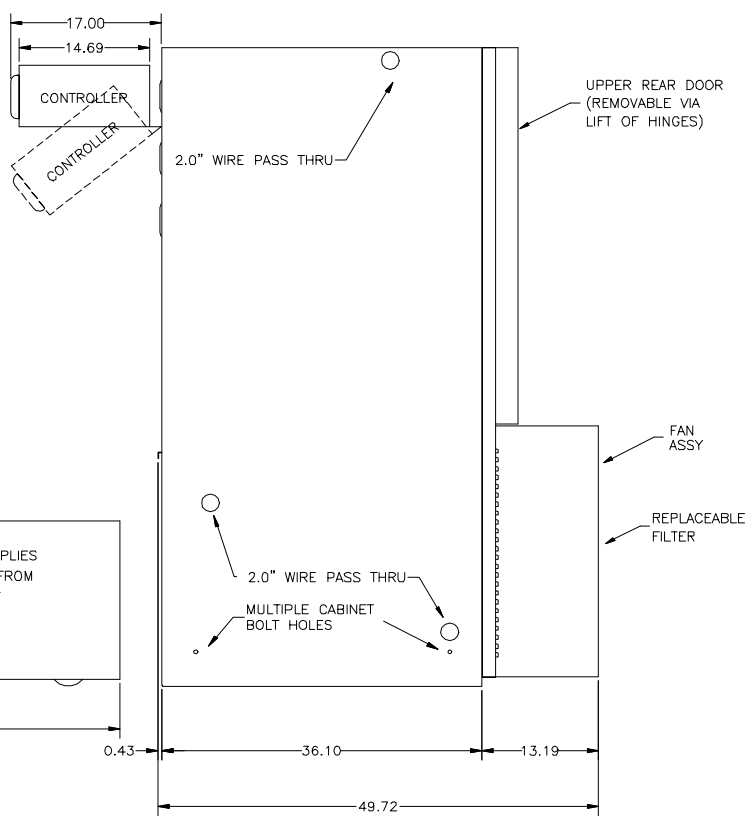
IMPORTANT: YOUR AC MAINS DISCONNECT BOX SHOULD BE EQUIPPED WITH CLASS RK5 FUSES (DUAL ELEMENT TIME DELAY) OR AN EQUIVALENT MOTOR-STARTING CIRCUIT BREAKER

NOMINAL LINE VOLTAGE	AVERAGE LINE CURRENT		AVERAGE LINE CURRENT		FUSE SIZE MAIN	FUSE SIZE AUXILIARY	MINIMUM WIRE SIZE EACH CABINET
	Z16 'HD'	Z16 'FM+HD'	Z12 'HD'	Z12 'FM+HD'			
208	61	90	47	65	75A	75A	6 AWG (13 mm ²)
220	58	85	44	61	75A	75A	6 AWG (13 mm ²)
240	53	78	40.5	56	75A	75A	6 AWG (13 mm ²)

SPLIT-LEVEL FIGURES FALL BETWEEN 'HD ONLY' AND 'FM+HD', DEPENDENT ON FM:HD RATIO.



SINGLE PHASE



TOLERANCES UNLESS NOTED .X ± .030 .XX ± .015 .XXX ± .005 ANGLES ± 1 DEG ALL ✓ INDICATES 125 MICRO INCH	ALL DIMENSION IN INCHES UNLESS OTHERWISE NOTED MUST COMPLY WITH WORKMANSHIP STANDARDS SPEC 817-1152-001
---	--

- NOTES:
- MAY BE ORDERED AS 1-5/8 EIA FLANGED OUTPUT. (REMOVABLE ADAPTER MAKES RF OUTPUT 2 INCHES TALLER THAN HEIGHT OF TRANSMITTER.)
 - DEFINITION OF TERMS:
 HD ONLY = HIGH-LEVEL = SEPARATE MODE
 FM+HD = LOW-LEVEL = COMMON MODE (20DB RATIO)
 SPLIT-LEVEL = MID-LEVEL = FM+HD (VARIABLE RATIO)

REV	LTR	ZONE	DATE	DFTM	ENG	ECD NBR
A	NEW DWG

HARRIS

HARRIS CORPORATION
 BROADCAST COMMUNICATIONS
 4393 DIGITAL WAY
 MASON, OHIO 45040

THIS DOCUMENT CONTAINS PROPRIETARY DATA OF HARRIS CORPORATION. NO DISCLOSURE, REPRODUCTION, OR USE OF ANY PART THEREOF MAY BE MADE EXCEPT BY WRITTEN PERMISSION.

DRAWN BY: Arrowsmith	TITLE: OUTLINE DRAWING
DATE: 31 JAN 06	Z12HD+/Z16HD+
ENG CHK: B KLESNER	IBOC TRANSMITTER
PROJ ENG: B GLECKLER	
MFG ENG: B OLSON	DWG NO. 852 9232 021 .
E: SHEET 2 OF 2	REV A