

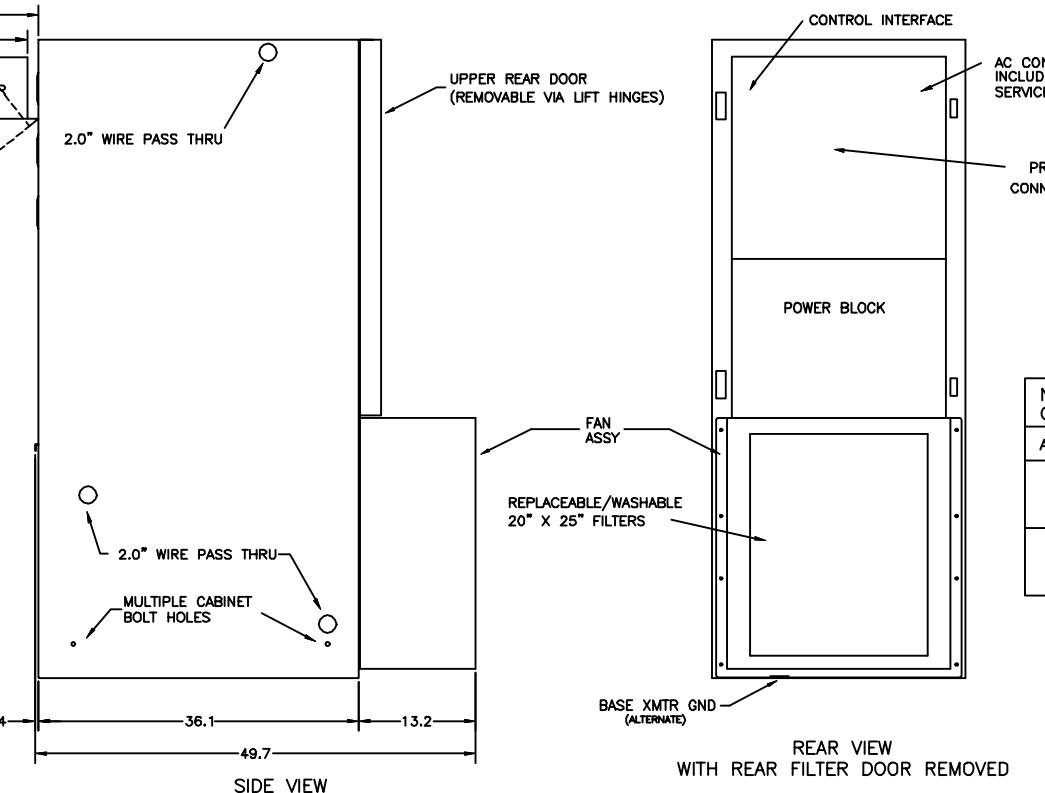
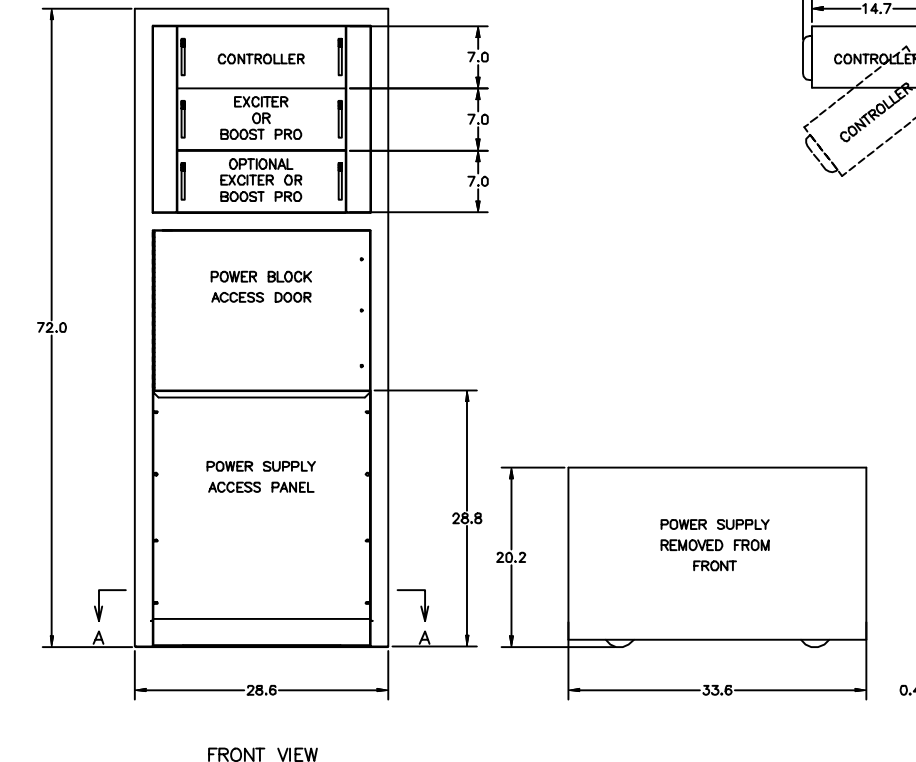
	TOTAL DISSIPATION	OUTPUT POWER	OVERALL EFFICIENCY	WEIGHT	
				3 PHASE	1 PHASE
Z8 'HD ONLY'	4,325 W (14,757 BTU)	1,750W	28.9%	1300 LBS 590 KGS	1395 LBS 633 KGS
Z8 'FM+HD'	5,114 W (17,499 BTU)	3,500W	40.7%	1300 LBS 590 KGS	1395 LBS 633 KGS
Z6 'HD ONLY'	3,336W (11,382 BTU)	1,300W	28.2%	1280 LBS 582 KGS	1375 LBS 625 KGS
Z6 'FM+HD'	3,836W (13,088 BTU)	2,500W	39.5%	1280 LBS 582 KGS	1375 LBS 625 KGS
Z4 'HD ONLY'	2,368W (8,079 BTU)	875W	27%	1130 LBS 514 KGS	1225 LBS 557 KGS
Z4 'FM+HD'	2,731W (9,318 BTU)	1,500W	35.5%	1130 LBS 514 KGS	1225 LBS 557 KGS

MINIMUM AIR FLOW INTAKE(50/60Hz)
 LOW SPEED: 700 CFM [20 CMM]
 HIGH SPEED: 1200 CFM [34 CMM]
 EXHAUST FLOW (ESTIMATE 10% LEAKAGE)
 LOW SPEED: 630 CFM [17.8 CMM]
 HIGH SPEED: 1080 CFM [30.5 CMM]
 UNDER NORMAL OPERATING CONDITIONS
 BLOWER SPEED IS "LOW".
 EXHAUST DUCT MUST NOT INDUCE ANY BACK
 PRESSURE TO TRANSMITTER AIR SYSTEM
 IF EXHAUST DUCT AND FAN ARE INSTALLED
 STATIC PRESSURE IN EXHAUST HOOD MUST
 BE BETWEEN 0.0" AND -0.01" [0.25 MM] H₂O
 INLET AIR TEMPERATURE MUST NOT EXCEED
 45 DEGREES CENTIGRADE AT SEA LEVEL.
 DERATE AT 2 DEGREES CENTIGRADE PER
 1,000 FEET ELEVATION.

CABINET HEAT RADIATION 5% OR LESS OF TOTAL DISSIPATION

NOMINAL LINE VOLTAGE	Z8S/C (Z4S/C REDUNDANT)					Z6S/C				Z4S/C					
	Z8 AVERAGE LINE CURRENT		Z4R AVERAGE LINE CURRENT		FUSE SIZE	MINIMUM WIRE SIZE		AVERAGE LINE CURRENT		FUSE SIZE	MINIMUM WIRE SIZE				
	'HD'	'FM+HD'	'HD'	'FM+HD'		'HD'	'FM+HD'	'HD'	'FM+HD'		'HD'	'FM+HD'			
3φ 3 WIRE	208	17	24	9	11	40A	8 AWG (8 mm2)	14	19	40A	8 AWG (8 mm2)	9	11	20A	12 AWG (3 mm2)
	220	16	23	8.5	10.5	40A	8 AWG (8 mm2)	13	18	40A	8 AWG (8 mm2)	8.5	10.5	20A	12 AWG (3 mm2)
	240	15	21	8	9.5	40A	8 AWG (8 mm2)	12	16.5	40A	8 AWG (8 mm2)	8	9.5	20A	12 AWG (3 mm2)
	437	8	12	4.5	5.5	20A	12 AWG (3 mm2)	7	9	20A	12 AWG (3 mm2)	4.5	5.5	20A	12 AWG (3 mm2)
	460	8	11	4	5	20A	12 AWG (3 mm2)	6.5	9	20A	12 AWG (3 mm2)	4	5	20A	12 AWG (3 mm2)
	480	7.5	11	4	5	20A	12 AWG (3 mm2)	6	9	20A	12 AWG (3 mm2)	4	5	20A	12 AWG (3 mm2)
3φ 4 WIRE	506	7.5	10	4	5	20A	12 AWG (3 mm2)	6	8	20A	12 AWG (3 mm2)	4	5	20A	12 AWG (3 mm2)
	360	10	14	5	6.5	20A	10 AWG (5 mm2)	8	11	20A	10 AWG (5 mm2)	5	6.5	20A	12 AWG (3 mm2)
	380	10	13	5	6	20A	10 AWG (5 mm2)	7.5	10.5	20A	10 AWG (5 mm2)	5	6	20A	12 AWG (3 mm2)
1φ	416	9	12	4.5	5.5	20A	10 AWG (5 mm2)	7	9.5	20A	10 AWG (5 mm2)	4.5	5.5	20A	12 AWG (3 mm2)
	208	32	45	18	21.5	70A	6 AWG (13 mm2)	27.5	37	70A	6 AWG (13 mm2)	18	21.5	40A	8 AWG (8mm2)
	220	31	43	17	20.5	70A	6 AWG (13 mm2)	25.5	35.5	70A	6 AWG (13 mm2)	17	20.5	40A	8 AWG (8mm2)
	240	28	39	16	19	70A	6 AWG (13 mm2)	23.5	32.5	70A	6 AWG (13 mm2)	16	19	40A	8 AWG (8mm2)

SPLIT-LEVEL FIGURES FALL BETWEEN 'HD ONLY' AND 'FM+HD', DEPENDENT ON FM:HD RATIO.



IMPORTANT: YOUR AC MAINS DISCONNECT BOX SHOULD BE EQUIPPED WITH CLASS RK5 FUSES (DUAL ELEMENT TIME DELAY) OR AN EQUIVALENT MOTOR-STARTING CIRCUIT BREAKER

NOISE LEVEL MEASURED ONE METER FROM FLOOR AND ONE METER FROM TRANSMITTER, NORMAL CONDITIONS

AC LINE FREQ	LOW SPEED		HIGH SPEED	
	FRONT/SIDE	<65 dBA	FRONT/SIDE	<74 dBA
50Hz	REAR	<71 dBA	REAR	<80 dBA
	FRONT/SIDE	<68 dBA	FRONT/SIDE	<79 dBA
60Hz	REAR	<74 dBA	REAR	<85 dBA
	FRONT/SIDE	<68 dBA	FRONT/SIDE	<79 dBA

TOLERANCES UNLESS NOTED
 .X ± .030 .XX ± .015
 .XXX ± .005 ANGLES ± 1 DEG
 ALL √ INDICATES 125 MICRO INCH
 ALL DIMENSION IN INCHES UNLESS OTHERWISE NOTED
 MUST COMPLY WITH WORKMANSHIP STANDARDS SPEC 817-1152-001

1 MAY BE ORDERED AS 1-5/8 EIA FLANGED OUTPUT. (REMOVABLE ADAPTER MAKES RF OUTPUT 2 INCHES TALLER THAN HEIGHT OF TRANSMITTER.)
 2 SEE THE TECHNICAL MANUAL FOR A SPECIAL NOTE CONCERNING 360 TO 416 VOLT SYSTEMS.
 3. DEFINITION OF TERMS:
 HD ONLY = HIGH-LEVEL = SEPARATE MODE
 FM+HD = LOW-LEVEL = COMMON MODE (20DB RATIO)
 SPLIT-LEVEL = MID-LEVEL = FM+HD (VARIABLE RATIO)

REV	DATE	DESCRIPTION	BY	CHK	APP
A					
B	5-25-06	BAK	BAK		53009

CORRECTED DIMENSIONS IN FRONT & SIDE VIEWS

HARRIS
 HARRIS CORPORATION
 BROADCAST COMMUNICATIONS
 4393 DIGITAL WAY
 MASON, OHIO 45040

THIS DOCUMENT CONTAINS PROPRIETARY DATA OF HARRIS CORPORATION. NO DISCLOSURE, REPRODUCTION, OR USE OF ANY PART THEREOF MAY BE MADE EXCEPT BY WRITTEN PERMISSION.

DATE	BY	TITLE
31 JAN 06	B ARROWSMITH	OUTLINE DRAWING
	B KLESNER	Z4HD+/Z6HD+/Z8HD+
	B GLECKLER	IBOC TRANSMITTER
	B OLSON	DWG NO. 852 9232 020
		REV B